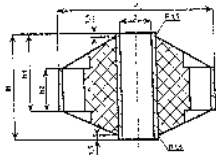


## SILENTBLOKY

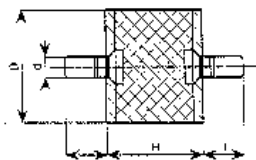
### PRUŽINY KUŽELOVÉ STN 63 5811

	d	D	D1	h	h1	H	H1
19.22	9 H11/c11	80	83	80 11x24	60	26	24
20.22	15H11/c11	102	106	102 11x20	75	34	30
11.22	25H11/c11	128	133	128 11x38	95	45	38
16.22	42H11/c11	160	166	160 11x48	120	58	48



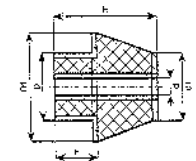
### PRUŽINY VALCOVÉ STN 63 5813

	D	d	H	l
51.12	12	M 4	15	10
42.12	18	M 6	20	10
45.12	25	M 6	20	12
116.12	35	M 8	25	16
63.12	50	M 10	40	20
87.12	70	M 12	48	24
109.12	100	M 12	65	25



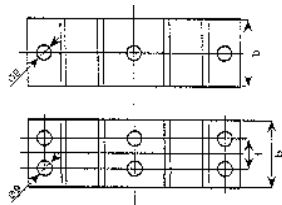
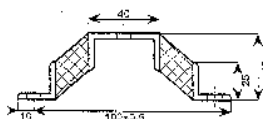
### PRUŽINY KOMBINOVANÉ STN 63 5812

	d	d1	D	D1	h	H
463.14	9H11/c11	65	55	75	36	68
196.14	15H11/c11	82	75	95	42	86
464.14	25H11/c11	105	100	120	52	109
195.14	42H11/c11	132	135	152	60	137



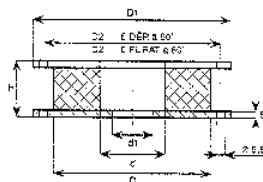
### PRUŽINY UHOLNÍKOVÉ STN 63 5815

	b	t
93.05	20c11	-
42.05	32c11	-
43.05	50c11	-
44.05	100c11	70+-0,5
45.05	210c11	140+-0,5



### PRUŽINY KOTÚČOVÉ STN 63 5816

	D	D1	D2	d	d1	H	S
17.13	150	195c11	175	50H11	30H11	44	2
18.13	175	210c11	190	50H11	30H11	44	2
19.13	200	240c11	225	90H11	35H11	46	2
20.13	220	254c11	-	90H11	35H11	46	2
21.13	235	275c11	255	75H11	35H11	48	3
23.13	270	315c11	295	75H11	40H11	48	3

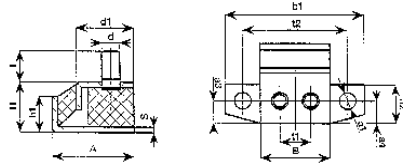


## SILENTBLOKY

### PRUŽINY HRANOLOVÉ STN 63 5814

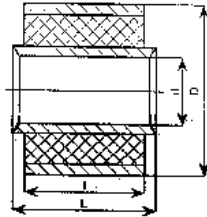
	A	a1	a2	a3	a4	B	b1	H	h1	d	d1	l
48.05	65	48	35	20	10	65	115	40	27	M10	11,5	20
92.05	105	78	50	32	20	100	150	60	45	M12	14	25
47.05	140	113	75	55	37	100	100	60	45	M12	14	25

	S	t1	t2
48.05	3	34	90
92.05	4	52	126
47.05	4	52	126



### PRUŽINY PUZDROVÉ typ 21 kalibrované STN 63 5819

	D	d	l	L
06.21	30	14	45	50
21.21	34	18	50	54
20.21	34	18,4	50	54
24.21	38	20	84	90
18.21	44	26	60	66
19.21	44	28,4	60	66
22.21	52	24	60	90
23.21	70	24	60	90

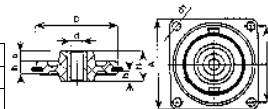


### PRUŽINY PUZDROVÉ typ 23 kombinované STN 63 5819

	D	d	l	L
56.23	28	14	45	49
87.23	80	42	80	86
76.23	90	50	135	145
28.23	100	56	100	108
20.23	110	63	165	177
03.23	125	75	180	192
98.23	140	90	140	150
63.23	160	100	160	172

### PRUŽINY MISKOVÉ STN 63 5817

	A	t	H	D	d	d1	h	b	a
20.15	32	25	10	25	4,2	3,2	2,5	5,6	4
21.15	45	35	16	38	6,2	4,2	6	9,5	4,5
19.15	57	45	25	50	10,2	5,2	10,5	18	4,5



### PRUŽINY NÁRAZNÍKOVÉ STN 63 5820

	D	d	H	l	R
77.16	18c11	M6	18	10	6
78.16	25c11	M6	25	12	8
76.16	35c11	M8	35	16	11
79.16	50c11	M10	50	20	17
80.16	70c11	M12	70	24	23

